



## the carbonpaid quiz

Write your answers in the space under the questions and then check below to see if you're right.

1/ How many tonnes of carbon are emitted by an average family car in a year?

2/ To the nearest thousand, how many miles are there between England and New Zealand?

3/ Does leaving a television or computer on standby make carbon emissions?

4/ What does CO<sub>2</sub> stand for?

5/ What percentage of carbon emissions are caused by individuals around the world, rather than by industry?

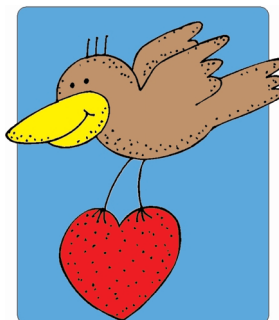
6/ Is it better for the environment to tumble dry your washing or hang it out to dry?

7/ How many degrees warmer is the earth, on average, than it was in 1900?

8/ How many cars are on the road in the UK?

9/ How much CO<sub>2</sub> can you save annually by insulating your loft?

10/ When's the best time to use your dishwasher or washing machine?



Turn the page over to see the answers

1/ Around four 2/ 12,000 3/ Yes, and they add about 10% to our electricity bills  
4/ Carbon Dioxide 5/ 35% 6/ Hanging it out, of course 7/ Around 1 degree Celsius  
8/ Nearly 30 million 9/ About half a tonne 10/ When they are full (ha ha, fooled you)!